

Luxembourg Urban Garden

©Erda Estremera/Unsplash



Press kit

07.05.2024

LUGA, the open-air exhibition
of urban gardens, landscaped
and artistic installations,
agricultural projects and living
spaces in Luxembourg.

with the financial support of



LE GOUVERNEMENT
DU GRAND-DUCHÉ DE LUXEMBOURG
Ministère de l'Agriculture,
de l'Alimentation et de la Viticulture



observer



LUGA NORDSTAD
in partnership with



LUGA WILL BE BLOOMING IN ALL IT'S GLORY, IN LUXEMBOURG FROM 7 MAY TO 19 OCTOBER 2025!


The LUGA exhibition will take place at four emblematic venues in Luxembourg City: Alzette Valley, Edouard André Municipal Park, Pétrusse Valley, and the Kirchberg quarter, as well as in the town of Ettelbruck in Nordstad. The city's open spaces will be transformed by landscaped creations, artistic interventions and agricultural installations designed to change the way we see cities through an inspiring experience packed with wonders to discover.

Along the trail, visitors will be encouraged to question their perceptions, explore new horizons and rethink the relationship between man and the urban environment. For six months, this unique exhibition, which is mostly free, will be an open-air laboratory of ideas, a platform for interaction and experimentation where visitors can all contribute to collective reflection on the future of our cities.

luga.lu



**MORE THAN 11 KM
OF OPEN-AIR
EXHIBITION TRAILS
PACKED WITH
WONDERS**



**LUGA embodies the
vision of a city of
the future where a
balance between
nature and urban life
is possible.**



**making
the invisible
visible**

LUGA Masterplan Luxembourg City

Gare Pfaffenthal
vers Ettelbruck

Parc municipal
Municipal park

Culture Hub

Ville Haute

Hamilius

Vallée de la
Pétrusse
Pétrusse valley

AQUATUNNEL

Luxembourg City
Tourist Office

Place de la Constitution

Vers
Gare Centrale

Pfaffenthal

Azette

LUGA Lab

Av. Montereu

Port Adolph

Pétrusse

05 07 09 11
06 08 10





Jardins urbains

Urban Gardens

- 01** *Jardin exploratif*, Fondation Pescatore, LUGA
- 02** *Jardins de la Fédération Horticole Luxembourgeoise*
- 03** *Roseaie Amélie*, LUGA, ville de Luxembourg, ASBL Patrimoine roses pour le Luxembourg, Lëtzebuerger Rousefrënn
- 04** *Plantes du Luxembourg*, Lycée Technique Agricole
- 05** *Jardin Partage*, Julie Chirol
- 06** *Wander Kautsch*, Eli.n.iki
- 07** *Les mystères du trésor des plantes médicinales*, Laurence Didier
- 08** *Le portail*, Naile Arslan
- 09** *Blue Sky*, Jérôme Goedseels
- 10** *Lien de connexion*, Carolin Kemkes-Günner
- 11** *Jardin Germinatif*, Cassandra Provenzano et Nadine Weirich
- 12** *Nice to BEE*, Carina Hahn
- 13** *Timeo*, Rien Veulemans
- 14** *Mange-Moi*, LUGA
- 15** *Herbularius*, N. Kirch, LUGA
- 16** *Le chant de l'Alzette*, Racine Carrée, Ty Maap
- 17** *Les périscopes*, Atelier LJN
- 18** *Water Forum*, LOLA, 2001, 51N4E
- 19** *Urban Oasis*, Atelier LOOS van VLIET
- 20** *Racines du futur*, Atelier eem & Paysarchitectures
- 21** *Parc Mansfeld*, Areal
- 22** *Grow Together Grow Green*, Topotek 1
- 23** *Triptyque*, Atelier du Vivant
- 24** *Après l'effondrement*, Oupapo
- 25** *Solum*, Atelier Faber
- 26** *Endymion*, Studio SNCDA



Installations paysagères et artistiques

Landscape and

Art installation

- 27** *L'arbre littéraire*, LUGA
- 28** *Serre Merveilleuse*, LUGA
- 29** *Le Festival des cabanes*, Service National de la Jeunesse
- 30** *Life on the verge*, Leon Kluge
- 31** *The Lower World*, Susan Philipz dans l'Aquatunnel sous la Ville
- 32** *The Living Pyramid*, Agnes Dene

Parcours artistique : *Show the Unshow, See the Unseen*, Markus Amk v.ch



Points d'informations

Information points

What to discover at Edouard André municipal park during LUGA?

Luxembourg City's Edouard André municipal park is one of the capital's most emblematic sites, offering over 30 hectares of greenery. The park is a popular spot with both locals and tourists who find a harmonious balance between nature, culture and leisure.

Visitors will be able to enjoy this recreational and cultural park steeped in fascinating history and legend. The developments and facilities created especially for the LUGA exhibition will take them into an enchanted world packed with discoveries and wonders: narrative trails, stunning greenhouses and mystical installations will plunge visitors into an enchanted land, with areas for relaxing and reading dotted along the route. It will also feature the art trail designed by German curator Markus Ambach, who specialises in creating artistic projects in public spaces.



Urban gardens in the municipal park



01. Jardin exploratif Fondation Pescatore

As part of the LUGA exhibition, an exploratory garden and orchid greenhouse are being developed at the park of the Pescatore Foundation. A Project in partnership with the Pescatore Foundation.



© LUGA



02. Les jardins de la Fédération Horticole Luxembourgeoise

These gardens showcase the expertise of Luxembourg's horticultural sector by creating a series of unique gardens during LUGA.



© LUGA



03. La roseraie du parc Amélie

Already open to the public since 2023, the Amélie Rose Garden is LUGA's very first landscaping project, developed in collaboration with Luxembourg City's Parks Department and the non-profit organisations *Lëtzebuerger Rousefrënn* and *Patrimoine roses pour le Luxembourg*. The garden unfurls at the foot of the statue of Amélie, at the heart of the Municipal Park. The landscape has been designed around roses named after women, in tribute to historic female figures.



© LUGA



04. Plantes du Luxembourg Lycée Technique Agricole

This planted garden created by students from the Gilsdorf Technical Agricultural College (LTA), in collaboration with Luxembourg City's Parks Department, as part of the LUGA exhibition, features Luxembourg's native plant varieties.



© LUGA

Landscape and artistic installations in the municipal park



Art trail by Markus Ambach ***Show the Unshow, See the Unseen***

A large part of the LUGA exhibition will be taking place in the valleys surrounding the city centre, like a belt of fragmented landscapes, natural habitats and historic landmarks that have been partially transformed for new uses in recent decades. Against this backdrop, the exhibition's circular trail features a number of themes and sequences that will form the contextual basis for the concept.

Concept: A green urban trail as a new narrative

Markus Ambach's artistic trail is based on a concept of six urban sequences, which form the thematic grid and draw on the fragments of landscape found with their original themes. They are linked by the green ribbon that emerges from the two rivers and the municipal park, with both cultivated and wild vegetation forming the backbone and main theme of the exhibition. Discovering the beauty of the invisible elements of this landscape will enhance the exhibition even more than the works of art themselves. They will activate their contexts to become a new perspective, a new narrative of this hidden yet exposed landscape. The integration of local players and their projects, as well as the various routes in the region such as the archaeological trails, the Pierre-Ernest de Mansfeld trail, the Vauban trail and the cultural itineraries, will contribute to this enrichment of local knowledge

The themes of the artistic trail are interlinked by the green thread of the river, with natural units, horticultural sequences, hidden gardens and restored spaces becoming one route in the project. Natural habitats consisting of small biotopes will be explored through the eyes of artists; small uncultivated patches providing space for project vegetation will take on a sculptural appearance; gardens and ecological niches will offer areas for artistic healing processes; and, finally, parks revealing the historical interaction between man and nature will be refreshed with new commitments through innovative landscape architecture.

By inventing a new narrative, displayed and alive in the exhibition's circular trail, with no real start or end, artists will address our relationship with nature from the earliest times to the present day, in constant interaction with the natural environment, inhabitants and visitors to this natural urban landscape. Wild, horticultural, cultural, social, psychic, historical or futuristic gardens will show the extent to which our entire lives are deeply involved, interwoven and interdependent with what is now called "nature", making human beings once again an integral part of it.

Biography

Markus Ambach (1963) is a curator, artist and initiator of numerous art projects and exhibitions in public spaces.

He studied at the Academy of Fine Arts in Düsseldorf and, after numerous exhibitions in Germany and abroad, founded the MAP project platform in 2002, which develops, curates and produces contextual projects in urban space on an international scale, in collaboration with various partners including local authorities, art institutions and urban stakeholders. Markus Ambach has held teaching appointments at the Stuttgart Academy of Fine Arts, Berlin University of Arts, Offenbach University of Art and Design and RWTH Aachen University. He has also authored and edited numerous texts and publications.



© Markus Ambach

27. L'Arbre littéraire

From a stage installed near the trees and water park in the Pescatore Foundation park, audiences of all ages will be invited to immerse themselves in a world of storytelling.



© Envato

28. La Serre merveilleuse

A wondrous greenhouse will display plants and flowers that could grow in the cities of tomorrow. Through this unique concept of plant luminescence at the frontier between art and science, plants magically light up in the dark. This technology does not use any genetic modification. It is an eco-responsible, biodegradable nutrient serum that is absorbed by the plant's sap to reveal the veins of the petals and leaves under black light. Their light effects range from violet to blue/green, enhancing the beauty of the vegetation.



Reference image

29. Les cabanes du Service National de la Jeunesse (SNJ)

Some fifteen fantastic huts hidden away in remote parts of the park are being designed as part of the "Huts Festival", organised by the National Youth Service (SNJ) and LUGA. These temporary installations will illustrate the LUGA themes such as ecology and sustainability. The colourful, original huts will be made mostly from recycled materials, out of concern for sustainability and climate protection.



© SNJ

LUGA living space: the Culture Hub in the municipal park

An ode to culture in the municipal park!

At the Culture Hub, a living and meeting area located by the pergola in Edouard André municipal park, visitors can enjoy a programme including a variety of events in a relaxing setting. With its unusual architecture and welcoming environment, the Culture Hub is the ideal place to stop and relax amid the park's greenery and enjoy some surprising, entertaining, educational and unplugged events. Open to all, this lively venue celebrates creativity, diversity and culture, while showcasing works that reflect and address the inspiring themes of LUGA.

Biergarten

The *Biergarten* (beer garden) is a venue refurbished for the LUGA exhibition where visitors can come together and enjoy tasty local and seasonal food in a pleasant, welcoming setting.

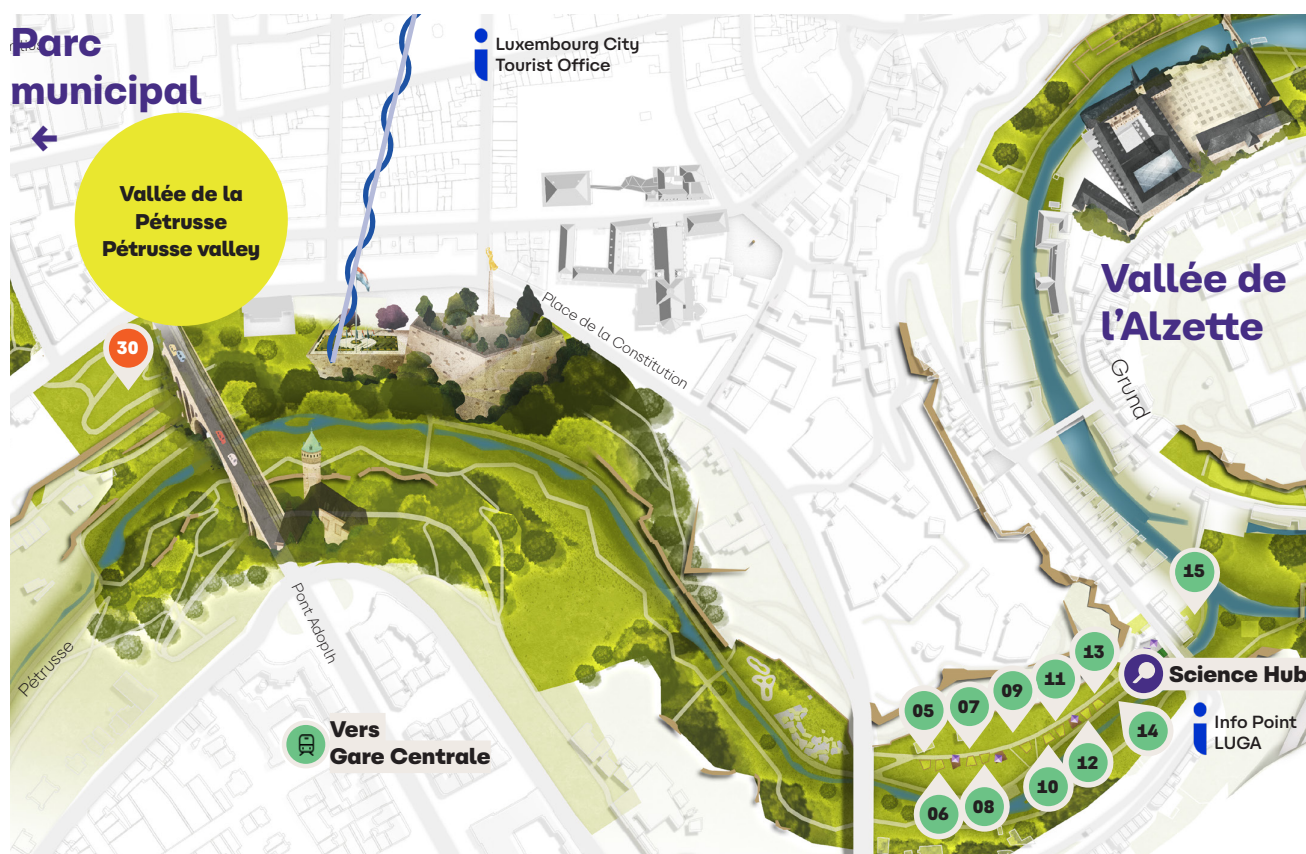


© LUGA

What to discover in the Pétrusse valley?

On the Pétrusse valley site, recently restored to its former glory, LUGA will be exploring innovative initiatives to open up the field of possibilities for a promising future.

Leaving the municipal park, this trail winds down from Avenue Marie-Thérèse to the Pétrusse valley below and to the garden designed by landscape architect Leon Kluge. This garden is the gateway to and link between the enchanting world created by LUGA in the municipal park and the Pétrusse valley. Further along the route, past the Skate Park, the Young Designers' urban gardens laid out along the river address the global challenges of our times. The gardens and installations along the Pétrusse River embody a future of opportunities, highlighting the invisible macrocosms and microcosms to which the valley is home.



Urban gardens in the Pétrusse valley

05. Jardin Partage **Julie Chirol**

This garden is designed as a space for contemplation and encounters. As visitors approach, totem poles set amidst the moving plants will create a link with the environment they reflect and with visitors too. They will then enter a willow hut decorated with ribbons featuring texts written in various alphabets. The living willow and the ribbons floating in the wind reinforce the dynamic character of the installation.

The isolated interior is an invitation to self-reflect and focus on the relationship with the ground and its plants (rose bushes from the Luxembourg rose-growing tradition), and the sky thanks to the opening above.

Julie Chirol is a French-Luxembourgish landscape architect qualified in architecture and landscaping, who has been working for Best Ingénieurs-Conseil as a landscaper and urban planner for almost three years. She began her career in France and has been working in Luxembourg since 2015. She is particularly interested in arts and crafts and has completed training and internships in basketry and textile arts.



© Julie Chirol

Materials

Woven green wicker, wood chips, recycled shuttering panels, recycled paving stones, decorated ribbons

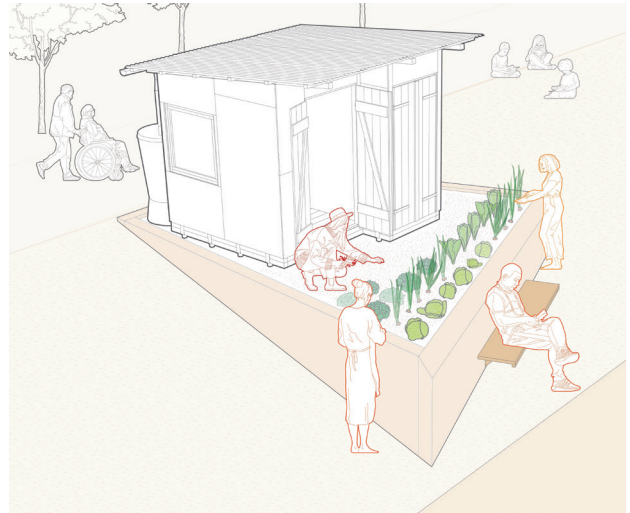
Plants

Ginkgo biloba, 'Anne Beffort' Rosa Kordes roses, Stipa tenuissima, Giant Onion - Allium giganteum, Sage - Salvia nemorosa

06. Wander Kautsch **Eli.n.iki**

Wander Kautsch reflects on urban gardening in Luxembourg, based on the principle of reusable, mobile, stand-alone and self-built garden houses. The installation focuses on the idea of urban gardening as a sustainable way of life, a way of becoming and being self-sufficient, representing the path towards societal and economic degrowth. *Wander Kautsch* showcases the design of these garden houses and addresses the theme of replacement with a garden house prototype that could be used according to the circular economy principle. Influenced by the Gartenlaube by architect Margarete Schütte-Lihotzky (Frankfurt, 1925-1930), *Wander Kautsch* retains the idea of three spaces: shared space, gardening space and storage space for bicycles. The construction will be donated to a local charity after the exhibition.

Eli.n.iki is a collaboration between two young architects, **Eliki et Eline**. In addition to architecture, they share an interest in gardening, model making and full-size construction, with a particular focus on circularity.



© Eli.n.iki

Materials

Timber construction based on the principle of the circular economy

Plants

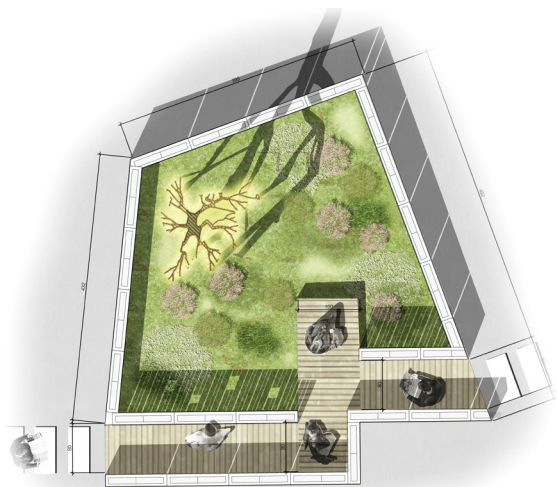
Garden plants (to be defined), flower beds

07. Les mystères du trésor des plantes médicinales

Laurence Didier

This temporary garden will be a sanctuary for reflection and rediscovery, aiming to change our common perception of 'weeds'. These plants, too often neglected and misunderstood, in fact represent a real pharmacy for humankind, an unsuspected source of benefits. The garden seeks to trigger deep reflection on our relationship with nature, while encouraging renewed appreciation for these unwanted plants. It will encourage visitors to rethink the way they see 'weeds' and to recognise the often overlooked assets they can bring to our world.

After graduating with a Master's degree in landscape architecture from the Technical University of Munich (TUM) in 2013, **Laurence Didier** worked for seven years at the Ernst&Partner design office in Trier, before broadening her experience for two years at Blumenthal. She began taking an interest in naturopathy and the power of plants in 2020 and has been working as a freelance landscape architect since 2023.



© Laurence Didier

Materials
Douglas wood, mirror

Plants
Tree, medicinal plants

08. Le portail

Naile Arslan

Le Portail is a sustainable wooden structure focusing on reuse and biodiversity. This bright green gateway embodies sustainability and draws inspiration from the arches of nature. Representing a passageway to something new, the concept illustrates how urban development can be achieved in harmony with nature. It takes us on a transformative journey, awakening us to the importance of being in harmony with our environment.

Naile Arslan studied at the Haute-École in Trier and earned a Master's degree in Architecture in 2024



© Naile Arslan

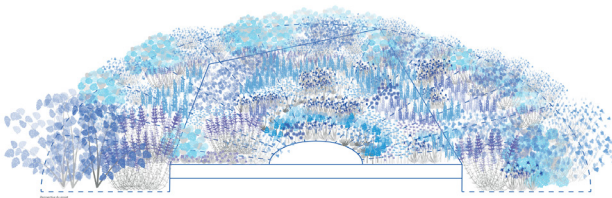
Materials
Wood, stone

Plants
Hedera helix Arborescens, Cortaderia selloana, Pennisetum orientale 'Karley Rose', Pennisetum alopecuroides Red Head, Lampenputzergras - Pennisetum alop. Hameln, Primula elatior, Isatis tinctoria, Aquilegia vulgaris, Cardamine pratensis

09. Blue Sky **Jérôme Goedseels**

Landscape architects and composers are both creative artists who compose a melody or a garden using only notes or plants as their raw material. Blue Sky aims to create similarities between these two arts, so that harmony, rhythm, dominants, contrasts and emotions emerge after analysis and translation. This project will be inspired by the musical work *Mr. Blue Sky* by Electric Light Orchestra, written and composed by Jeff Lyne in 1977. The design of the project is a circular arc in reference to an orchestra in front of its conductor.

Jérôme Goedseels was born in 1991 in Huaraz, Peru, and earned his Master's degree in Garden and Landscape Architecture in 2017. He has taken part in the Wesserling Festival (2019, 2020 and 2022), the Amiens Hortillonnages Festival (2020), the Chaumont-sur-Loire International Garden Festival (2023) and the Double Rise Festival in Romania (2019). He now teaches garden and landscape architecture at the Haute École Lucia de Brouckère.



© Jérôme Goedseels

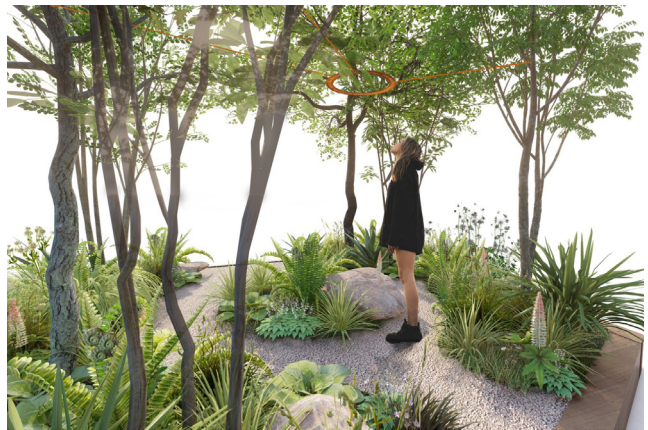
Plants

Delphinium pacific 'Summer Skies', *Brunnera macrophylla* 'Little Jack', *Centaurea cyanus* 'Blue Diadem', *Aster alpinus* 'Blue Beauty', *Myosotis sylvatica* 'Savoie Blue', *Borago pygmaea*, *Salvia pratensis* 'Sky Dance', *Ceanothus* 'Blue Mound', *Agapanthus* 'Blue Heaven', *Veronica austriaca* 'Royal Blue', *Salvia patens*, *Muscari aucheri* 'Blue Magic', *Nigella damascena* 'Moody Blues', *Linum perenne* 'Saphir', *Hydrangea macrophylla* 'Endless Summer', *Perovskia atriplicifolia* 'Blue Haze', *Allium caeruleum*, *Mazus reptans*, *Phlox paniculata* 'Blue Paradise', *Sisyrinchium angustifolium*, *Plumbago capensis*

10. Bond of Connection **Carolin Kemkes-Günner**

"The truth is that we are all bound by a bond of infinite love." The design here clearly emphasises the vegetation used, which aims to convey both tranquillity and naturality through different shades of green and a floral touch. This rich green beckons visitors inside the garden to discover the 'Corten' steel ring, quietly floating above the vegetation and representing its link. A small path winds around a peaceful central island. Both the formal language and the materiality of the path draw their inspiration from the natural, stony bed of the Pétrusse River, and thus echo the *genius loci*.

Carolin Kemkes-Günner first began to take an interest in plants and the design of open spaces during her training as an architectural draughtswoman at the Geo3 design agency in Bedburg-Hau. She went on to continue her studies and earned a bachelor's and a master's degree in landscape architecture from Osnabrück University of Applied Sciences. Since 2019, Carolin has been working freelance for various landscape architecture firms alongside her studies which she completed in January 2024.



© Carolin Kemkes-Günner

Materials

Water-edged path surface, seating made of regional and natural sandstone, Corten steel ring

Plants

Acer campestre, *Amelanchier laevis*, *Fraxinus excelsior*, *Prunus padus*, *Sorbus aucuparia*, *Aruncus aethusifolius*, *Aster divaricatus*, *Astrantia major*, *Brunnera macrophylla*, *Carex pendula*, *Deschampsia cespitosa* 'Palava', *Dryopteris filix-mas*, *Epimedium grandiflorum*, *Galium odoratum*, *Geranium macrorrhizum* 'Spessart', *Geranium nodosum*, *Hakonechloa macra*, *Heuchera villosa* var. *Macrorrhiza*, Hybrid *Hosta* 'Elegans', *Hosta elata*, *Luzula nivea*, *Omphalodes verna*, *Polygonatum multiflorum*, *Phyllitis scolopendrium*, *Polypodium vulgare*, *Rodgersia*

11. Jardin Germinatif PALEA Architecte

The *Jardin Germinatif* (Germinative Garden), an ethereal, ephemeral blossoming from May to October, celebrates the seasons through living willow, a metaphor for the fleeting flowering of the plants. These gracefully woven structures reflect summer growth. In May, like buds ready to bloom, they reveal their beauty. During the summer, vibrant with greenery and vitality, they offer a symphony of colours and fragrances. In autumn, mingled with the golden hues of the leaves, they evoke the cyclical nature of plant life, capturing the impermanence of each season.

Nadine Weirich graduated in 2011.

Cassandra Provenzano graduated in 2019.

Cassandra Provenzano joined PALEA Architecte in 2019 and has since taken part in a variety of projects, including the redevelopment of the public square in front of the town hall in Pétange, the landscaping of the park at the new town hall in Frisange, the redevelopment of the school playground in Frisange, the redevelopment of the historic garden in Grevenmacher, and the park as part of the new Kiem special development plan in Kirchberg.



© Palea Architecte

Materials

Willow branches, log paving, dead wood trunks, local stone monoliths

Plants

Leucanthemum vulgare / *Echinacea purpurea* / *Salvia nemorosa* / *Iris sibirica* / *Thymus serpyllum* / *Deschampsia caespitosa* 'Tardiflora' / *Knautia macedonica* 'Mars Midget' / *Aster novae-angliae* 'Rosa Sieger' / *Tanacetum parthenium* / *Sedum album* 'Coral Carpet' / *Verbascum nigrum* 'Album' / *Scabiosa columbaria* 'Butterfly Blue' / *Calamagrostis acutiflora* 'Karl Foerster' / *Miscanthus sinensis* 'Silberspinne' / *Centaurea montana* 'Black Sprite'

12. Nice to BEE Carina Hahn

Drawing attention to the vital role of bees, *Nice to BEE* is a project focusing on sustainability, education and support for local wildlife. The concept will create a unique, dynamic space inviting visitors to think about environmental and social challenges, and encouraging a deeper connection with our environment. Using sustainable materials, the garden will underscore the resilience of nature while drawing a connection with the ecological restoration of the Pétrusse River.

Carina Hahn studied at the Haute-École in Trier and earned a Master's degree in Architecture in 2024.



© Carina Hahn

Materials

Wood, stones

Plants

Aconitum napellus, *Viola tricolor*, *Betonica ocinalis*, *Centaurea cyanus*, *Campanula persicifolia*, *Centaurea jacea*, *Malva sylvestris*, *Pilobium angustifolium*, *Salvia rosmarinus*, *Lavandula angustifolia*, *Pennisetum alopecuroides*, *Leucanthemum*, *Cortaderia selloana*, *Orge à crinière* (*Hordeum jubatum*), mélange de fleurs de prairie

13. *Timeo* Rien Veulemans

Timeo is an immersive garden where fear of the environment plays a key role, as in Glenn Albrecht's concept of 'eco-anxiety'. It thus challenges conventional approaches to solving problems by encouraging emotional vulnerability and reflection on climate change. Through an 'apocalyptic' narrative, it reveals new perspectives on environmental disasters, turning fear into hope by depicting nature's supremacy over humankind. The garden's visual narrative, with contrasting colours, weeping conifers and draped grass, vividly depicts environmental cataclysm and the need for good environmental stewardship. *Timeo* will create a sanctuary for self-reflection, urging visitors to confront their fears and cherish the beauty of nature in the face of uncertainty.

Rien Veulemans is a landscape designer, urban planner and gardener based in Brussels. Passionate about storytelling, flora and experimentation, he recounts stories through fantasy landscapes, blending environmental awareness and sustainable management with inspiring planting concepts. His creations aim to challenge the boundaries between public and private spaces.



© Rien Veulemans

Materials

Building rubble, Black earth (mixture of sand, lava and earth), Black volcanic sand, Fragments of lava

Plants

Echium wildpretii, Euphorbia cyparissias 'Fens Ruby', Juniperus horizontalis 'Golden Carpet', Isoplexis calcantha, Ophiopogon planiscapus 'Niger', Phormium 'Black Velvet', Picea omorika 'Pendula Bruns', Sagina subulata 'Aurea', Scleranthus uniorus, Sedum album 'Coral carpet', sedum dasphyllum, Sedum hakonense 'Chocolate Ball', Sedum reexum 'Angelina', Sedum spurium 'Dragon's Blood', Sempervivum 'Black', Sempervivum 'Faramir', Sempervivum 'Red Rubin', Sequiadendron giganteum pendulum, Stipa tenuifolia, Uncinia uncinata 'Rubra', Lupinus citrinus, Lupinus 'Gallery yellow', Yucca lifera 'Australis', Yucca rostrata

14. *Mange-Moi* LUGA

This patch of greenery, which is gradually nibbling away at one of the symbols of mass food consumption, is an invitation to rethink a more sustainable food system, support local producers and create links with the food we eat. It raises questions about our current food model, in which agricultural production is responsible for around 20% of greenhouse gas emissions and 70-80% of deforestation worldwide, through intensive livestock farming, soya and palm oil production, and subsistence farming (source: WWF). This micro-garden questions our approach to food for a more sustainable future, aspiring to a future where cities are living food ecosystems, where every vacant space can contribute to weaving a food belt and become a source of fresh, local produce. Inspired by edible forests, the multi-strata, edible and diverse plantations colonise the trolleys, replacing the sterile turf.

A project developed by LUGA landscape architect, **Delphine Hardy**.



© LUGA

Materials

Benches made from standard 240L supermarket trolleys, wooden seats, fine crushed mineral covering

Plants

Amelanchier lamarckii, Mespilus germanica 'Nottingham', Sambucus nigra, Hibiscus syriacus Totus Albus, Aralia cordata 'Sun King', Rosa canina, Achillea millefolium 'White Beauty', Alchemilla mollis, Geranium pratense, Tulbaghia violacea, Calendula officinalis Pygmy Buff, Salvia 'Nachtvlinder', Foeniculum vulgare, Capucine de jardin «Laitière», Borago officinalis, Hemerocallis 'Gentle Shepherd', Matteuccia struthiopteris, Akebia quinata

Landscape and artistic installations in the Pétrusse valley

30. *Life on the verge* Leon Kluge

Life on the verge is a celebration and an educational garden focusing on the extraordinary life cycles and diversity of plant species that inhabit the roadside areas which most of us largely ignore, although they are habitats for many wild species including insects, birds and small mammals.

This habitat connects up wild areas much like an artery in the human body. If wild areas are completely separated from each other, the genetic heritage loses its diversity, to the detriment of many species. Plant life is a very important part of the verge, providing shelter and food for all kinds of animal species. In many cases, overgrazing, poor farming practices and urban development are destroying plant habitats and they would disappear without the small verge patches. A verge does not always have to be cut back.

Leon Kluge studied horticulture and landscaping in Israel.

He was then employed by SNIE international to develop new landscapes for their estates (Mayotte) and created the award-winning Fever Tree Nursery (Nelspruit, Mpumalanga). His projects have been featured in many international architectural magazines and books. He has been invited to create his unique landscapes all over the world and is the only African landscape designer to have won the Gardening World Cup (Nagasaki, Japan). He also won the Best Designer Award at the Philadelphia Flower Show (USA) and several gold awards at the prestigious Chelsea Flower Show (UK). He was also the first African designer to win a gold medal at the Singapore Garden Festival, and at the New Zealand International Flower Show.



Concept design



31. *The Lower World* Susan Philipsz – Aquatunnel

The Lower World is a soundscape developed specifically for the Aquatunnel, which runs beneath the old parts of Luxembourg's capital city. While mermaids evoke water, mythology and underground shelters, they are also associated with the garden theme. And although they attracted sailors, the Greeks did not depict mermaids as deities of the sea, but rather in their "flower-strewn meadow". Here, Susan Philipsz fills the Aquatunnel with sound, working with the venue's specific features and creating multiple associations to encourage visitors to reflect on their surroundings.

A project in partnership with Mudam Luxembourg.

Biographie

Susan Mary Philipsz OBE (1965, Glasgow, Scotland) was originally a sculptor, but is best known for her soundscapes. She records herself singing a cappella versions of songs that are broadcast over a sound system in the gallery or other installation.

She has gained international recognition, with major solo exhibitions of her work in museums and galleries around the world, as well as at the Venice and Istanbul Biennales and as part of dOCUMENTA 13 in Kassel. In 2010, Philipsz won the Turner Prize, awarded for the first time to an artist working with sound. She currently lives and works in Berlin.



LUGA living space : The Science Hub in the Pétrusse valley

An area for relaxing and experimentation nestling in the heart of the valley!

The Science Hub is designed to be a laboratory for research, education, experimentation and a small exhibition area. Key issues relating to biodiversity, science, food and climate will be addressed through exhibitions, conferences, debates, workshops and a host of other events on the LUGA programme, to highlight the often invisible innovations born within nature itself.

Around the Science Hub, which is also a visitor information centre, other recreational facilities in the Pétrusse Valley will be open to the public, including the skate park, fitness park, crazy golf course and kiosk.



© LUGA

What to discover in the Alzette valley?

At this site, the LUGA Exhibition will explore urban ecology, the climate and the various forms of dialogue and expression between man and nature.

Inspired by the natural beauty of the site and its historic past, LUGA invites visitors to explore the themes of art and dialogue along this route laid out through impressive urban gardens designed to challenge our perception of urban space. Art and landscaping foster dialogue and encourage interaction with the public. The LUGA Lab is a temporary structure erected in Odendahl Park in Pfaffenthal to promote interaction between generations in a setting designed to rethink the use of public space.

Illustrating the theme of “rendering the invisible visible”, the temporary urban gardens laid out along the Alzette Valley encourage the encounter between man and nature in an urban setting, while enhancing uncultivated spaces, showcasing the heritage and sparking reflection on sustainability and the circular economy.



Urban gardens in Alzette valley



15. *Herbularius* LUGA Garden

This garden is a contemporary take on the medieval physic garden, also known as Herbularius, which once accommodated a variety of medicinal, aromatic and condiment plants, whose uses were often combined.

The layout is inspired by its position at the mouth of the Pétrusse and Alzette rivers. It offers a diversity of spaces, varying in height and exposure, creating ideal conditions for each plant and bringing the vegetation closer to visitors. The traditional features of the physic garden, such as natural wood panels, raised beds and box trees, have been modernised and adapted to today's conditions.

Aromatic plants will form the heart of this garden. They are grown and selected with passion in Luxembourg by the Kirsch family of market gardeners who have specialised in aromatic herbs for over 40 years. They will be enhanced by medicinal, flowering and melliferous plants, creating a garden dedicated to health, biodiversity and education.

This garden was designed by Delphine Hardy, LUGA's landscape architect, in collaboration with the City of Luxembourg and Mr Niki Kirsch, who initiated the LUGA exhibition in Luxembourg.





16. *Le chant de l'Alzette* Racine Carrée, Atelier Ty Maap

This garden aims to play on the distinctive features of the site and create a better balance between the dominant mineral infrastructures, the Alzette river, plants and man. The unseen but acoustic presence of the Alzette is depicted through a grid that etches the characteristic pattern of a sound frequency on the ground. This imprint creates a link between what we perceive (the sound frequency) and what we hear (the nearby waterfall), evoking the river at the heart of the garden. The sound wave is also evoked by an aerial ribbon of wicker, through which the plants sing the 'song of the Alzette'.

Project designers

Landscape architects Mathieu Allain and Thomas Van Eeckhout have been working together regularly since 2013, designing both private gardens and public spaces. They were both freelance project managers in a Brussels garden and landscape architecture agency between 2013 and 2020, developing diverse projects in a wide range of contexts including school campuses, urban parks, landscaped cemeteries, eco-neighbourhoods, and historic gardens. Their collaboration revealed a positive synergy that the two landscape architects continue to nurture through joint projects, now enriched by the professional experience that they each continue to gain independently.

Thomas Van Eeckhout began his landscape design training in Flanders and earned a Master's degree in landscape architecture in the Netherlands (Larenstein, Wageningen University). He has been managing the Racine Carrée office in Wallonia since 2004.

Mathieu Allain studied in Belgium, where he earned a Master's degree in landscape architecture from the Gembloux Faculty of Agriculture in 2013. He founded the Brittany-based Ty Maap agency in 2023, after working for eight years in Brussels.



Materials and plants

The project is mostly designed using bio-sourced materials. Many components come from re-use sectors, and they are all reusable or recyclable: wooden beams, a path made of wooden shuttering panels, an aerial structure made from reinforcing bars and wicker weaving. The plants include perennials arranged in layers of flowering colours depicting the seven colours of the rainbow.

© Racine Carrée et Atelier Ty Maap



17. *Les périscopes* Atelier LjN

Through interactive mirrors and the prism of an optical device, *Les périscopes* (Periscopes) is an invitation to take a fresh look at the Bock rock, its history and its flora. The aim is twofold: firstly, to revisit the periscope concept through interactive mirrors arranged within wooden structures designed as observatories, while offering a new viewpoint of the cliff, its heritage and its flora. For the summer, furniture will also be integrated so that strollers can take a break and contemplate the rock in a different way.

Project designers

Atelier LjN is a landscape design agency at the crossroads of the living world, poetry and ingenuity. The agency works to turn a location into a unique, surprising and atypical living space.

After qualifying in landscape design in France, **Richard Mariotte** continued his studies in Belgium. He then attended university in Canada and, after gaining experience in agencies, where he managed a variety of projects on different scales, he co-founded Atelier LjN in 2017.

After preparing to study science, **Charles Paquelet** finally opted for architecture. After graduating as an architect and urban planner in Belgium, he joined Atelier LjN as a project manager.



Materials

Wood, stainless steel mirror, rope

© Atelier LjN

Plants

Lily of the Nile (Agapanthus), bellflowers (Campanula), carnations (Dianthus), angel hair grass (Stipa), mallow (Malva), stonecrop (Sedum), rosemary (Rosmarinus), ivy (Hedera)



18. Water Forum

LOLA Landscape Architects, 2001, 51N4E

The vision of LOLA is to revitalise the historic Alzette valley, a vital blue artery, and to centre their narrative project on the fragility of the river and the urgency of its restoration. Using innovative purification techniques, a flow of water will purify the river, making it healthy and clean.

This project aspires to be a catalyst for change, where the water encourages engagement, reflection and dialogue about water quality and its wider implications for community life and natural ecosystems. It is a statement about the power of design to bridge the gap between environmental needs and urban life, prompting visitors to imagine a future where rivers are not just bodies of water, but an integral part of our communities.

Project designers

LOLA studies and designs the spatial transitions of LOST LANDSCAPES. With carefully thought-out ideas and targeted interventions, the designers aim to create remarkable, beautiful sites that are both surprising and thriving. Creating unique, memorable experiences is key to all their projects. Through research, experimentation and design, LOLA combines knowledge of landscapes and ecosystems with contemporary ideas about people, space and nature. LOLA designs public spaces such as parks and squares, works on urban and rural redevelopment plans, develops landscape transformation strategies and carries out spatial research. Founded in 2006 by landscape architects Eric-Jan Pleijster, Cees van der Veen and Peter Veenstra, their headquarters in Rotterdam (Netherlands) and regional office in Shenzhen (China) employ 40 landscape architects, urban architects and designers. Taking an integrated approach to their projects, they continually work with other agencies and institutions to benefit from their specific knowledge and experience. LOLA works in the Netherlands and worldwide for governments, regional and local authorities, non-governmental organisations and project developers. They have won numerous awards, including WAF China, WLA Honour, Rooftop of the Year and the AAPME Excellence Award.

After Luxembourg in Transition and Luxembourg Ceinture Verte, **LOLA Landscape Architects, 2001**, and **51N4E** are partnering for the third time in Luxembourg. Their ambition is to develop Luxembourg's vision of a zero-carbon future, with a clear focus on the environmental transition.



© LOLA Landscape Architects, 2001, 51N4E

Materials and plants

Use of locally-sourced materials that are directly linked to the human ecosystem of the Alzette river. The heaviest materials, such as beams and concrete blocks, will be rented for the duration of the exhibition. Features will include ArcelorMittal steel beams, phytoremediation plantations, stabilisation sand, Buffadini PV panels, and seats made from locally harvested hay.



19. *Urban Oasis* Atelier LOOS van VLIET

The *Urban Oasis* landscaped installation is a temporary green oasis, concealed amidst the busy urban landscape. This welcoming green environment is designed with a wide variety of plants to reduce heat stress, increase biodiversity and create a harmonious balance between nature and urban development. It is not just a place for relaxing, but also an environment attractive to birds, butterflies and bees, offering possibilities for nesting using specially designed objects. These efforts will help to maintain biodiversity and create a healthy habitat. The plants have been chosen to provide food, thereby providing a habitat for different species.

Project designers

LLOOS van VLIET is a landscape design, architecture and urban planning agency boasting extensive experience in these sectors. By proposing sustainable, locally-rooted design solutions, they seek to address the current global challenges facing our planet and especially our cities, including climate change, biodiversity and water management. Through their vision, the very essence of sites is deeply rooted in all their designs. They imagine and create meaningful places and unforgettable spatial experiences, tailored to the conditions of the site.



© Atelier LOOS van VLIET



20. *Racines du futur* Atelier eem, Paysarchitectures

Racines du futur is an ephemeral garden featuring an interweaving sculptural creation, accommodating uses and encouraging lush plant growth. The project develops around three phases: firstly, the fertile soil is restored, then roots emerge from the hillside, and finally twining plants wind their way up towards the sky. This installation speeds up time: giant roots suddenly emerge from the hillside setting out to conquer the Alzette valley. Designed to adapt to the geography of the site and shaped by the growing plant life, a wide floor will lead visitors to an extraordinary balcony overlooking the valley, creating a vast landscape sculpture. The mineral walls and floors will be colonised by voluble plants climbing up and wrapping themselves around steel sculptured forms.

Project designers

Atelier eem et Paysarchitectures have been creating works of art and gardens together for over ten years. As landscape architects and visual artists, they ingeniously intertwine art and landscape, shifting from one to the other and integrating different disciplines into building and urban development. This hybridisation leads to contextual landscape sculptures that reveal the ineffable and provide a singular setting for multiple uses.

The architects, engineers, artists and landscape designers at **Atelier eem et Paysarchitectures** are of German, Italian and French nationalities working in Paris. In 2019, the garden of peace *Le troisième train*, which won the EGHN European Garden Award, transformed a clearing in the forest of Compiègne into an artistic garden. In 2023, the adventure continued with *Tra ipetri*, a temporary work installed on the citadel of Ajaccio and *Les Cristaux*, which transforms public space through design in Saint-Denis.



Materials

Steel reinforcements, wooden floor, reused asphalt ramming mix.

© Atelier eem, Paysarchitectures

Plants

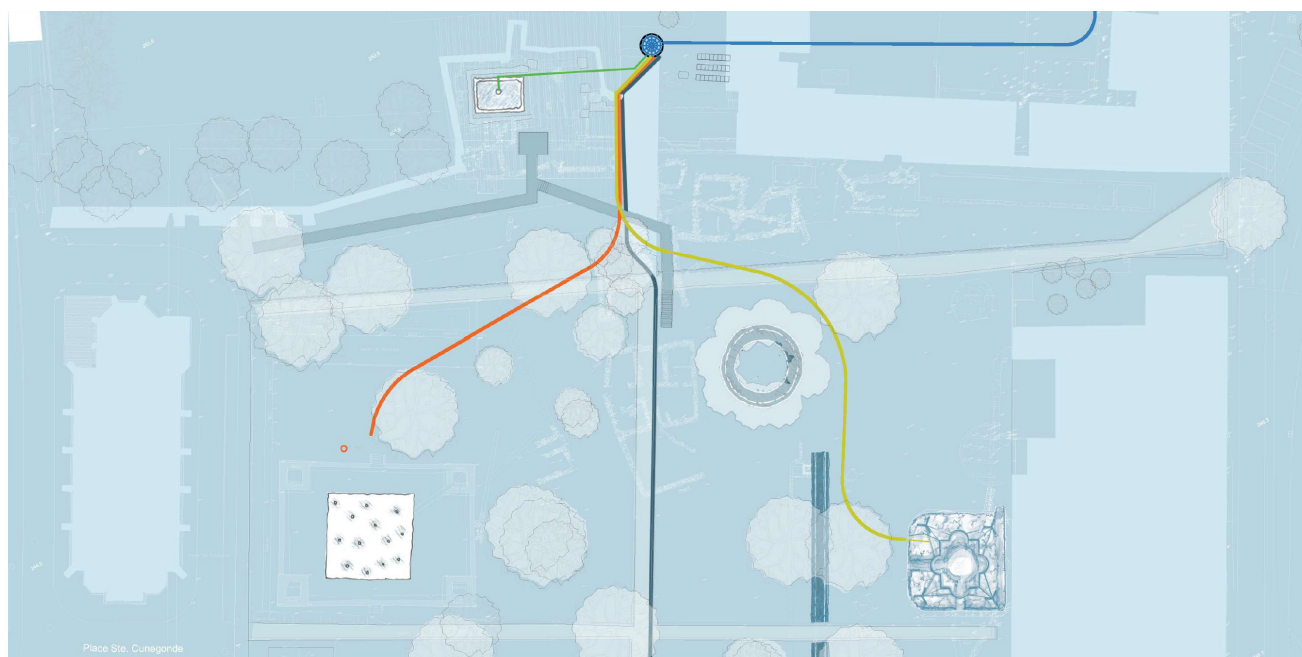
Pioneer plants: Blackthorn (*Prunus spinosa*), Avalanche Clematis (*Clematis «avalanche»*), Scotch broom (*Cytisus scoparius*), Common Heather (*Calluna vulgaris*)

Voluble plants: Common hop (*Humulus lupulus*), Golden hop (*Humulus lupulus aureus*), Clematis Armandii, Chocolate vine (*Akebia quinata*)

21. Mansfeld park

In November 2022, Luxembourg City launched a European Ideas Competition with the aim of promoting and rehabilitating the Mansfeld site, located in the city's Clausen district. At the selection panel's last session in May 2023, two of the five shortlisted projects were selected: Logis Mansfeld by Kaell Architecte and Areal Landscape Architecture, and Renaissance de Mansfeld by Urban Agency and Binario Architectes.

LUGA has partnered with Luxembourg City to work with the two agencies selected by the panel to develop a laboratory garden based on the project submitted for the competition. Areal, the Luxembourg firm of landscape architects has taken up the challenge of creating a temporary garden designed to test future ideas for Mansfeld Park and study the best options for visitors regarding the future development of this enchanting site.



© Areal



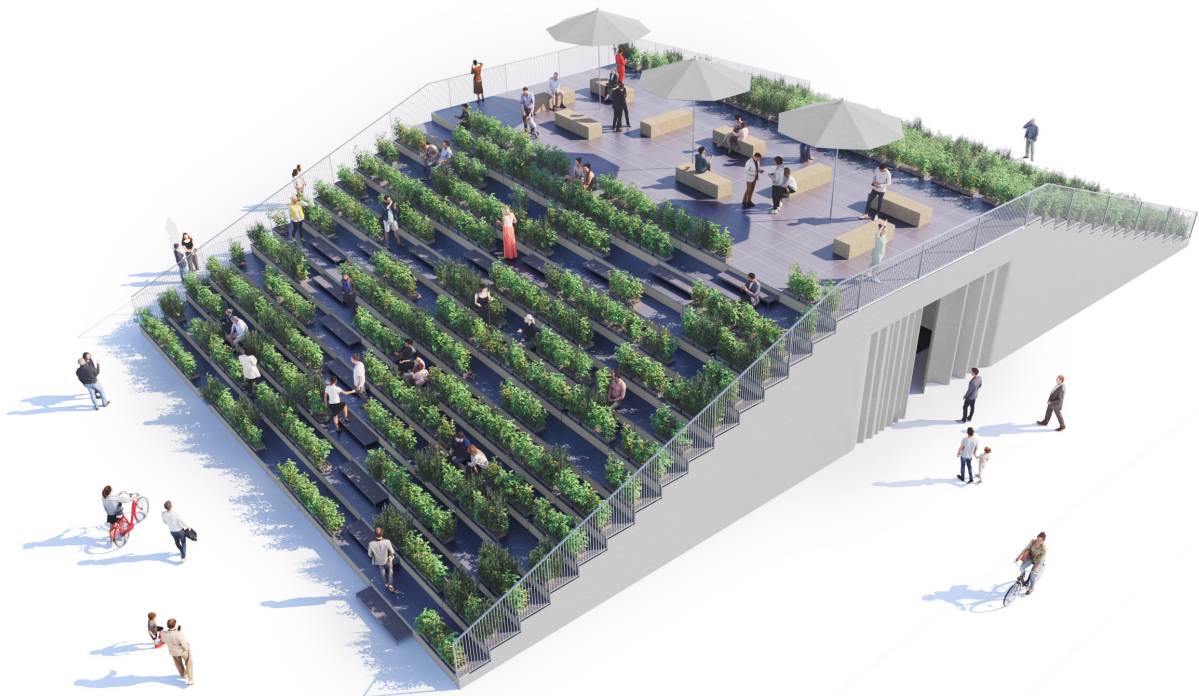
22. *Grow Together Grow Green* Topotek 1

This collaborative project adopts an approach to urban reforestation that goes beyond the sole act of planting, weaving a narrative of collective responsibility. The project's focus on extending tree cover implies a deliberate collective effort to combat the local impact of climate change. In Milan and Bergamo, the *Grow Together Grow Green* installation, covered with a variety of seedlings specific to the region, has served as a tangible representation of the city's commitment to sustainable transformation. Thousands of trees have been adopted, and some have already been planted in public spaces and private gardens across the cities.

Project designers

Topotek 1 works in landscaping and architecture, regarding itself as a traveller to the marginal parts of typologies and scales, with forays into urban design, music and art. The agency develops concepts through a critical and inquisitive understanding of contemporary, cultural and historical realities. The hybridisation of subjects and disciplines, the transmission and re-contextualisation of design elements, and the staging of scenographic sequences are all strategies that define the agency's work.

Martin Rein-Cano is the founder, creative director and associate director of Topotek 1. He studied landscape architecture at the Technical University of Hannover and the Technical University of Karlsruhe, before going on to study art history at Frankfurt University. He founded Topotek 1 in 1996.





23. *Triptyque* Atelier du Vivant

The *Triptyque* landscaped installation aims to highlight, amplify and question the interrelationships between three processes: the development of spontaneous plants, the fructification of fruit trees and the network woven by pollinating insects.

The project builds on the site's existing features by thematising and amplifying the dynamics at work.

It is made up of three parts: the spontaneous garden growing along the wall; the fruit garden, designed as a nursery for fruit trees and shrubs that will be planted in public spaces at the end of the LUGA exhibition; and, finally, the central square, straddling the two levels, which will serve as a reception, play and entertainment area. As a whole, *Triptyque* is intended to be a site where insects and humans can live together and flourish.

Project designers

Founded in 2022, Atelier du Vivant designs simple, unique creative solutions tailored to each location. Whether plants are already present or not, they are always given pride of place as a living material with multiple meanings.

Cyril Servettaz is a gardener, beekeeper and qualified landscape designer who graduated from the École Nationale Supérieure d'Architecture et de Paysage of Bordeaux in 2016.



© Atelier du vivant



24. Après l'effondrement OUPAPO

Drawing on the geomorphology of the site (the foot of the cliff), the garden *Après l'effondrement* (meaning After the Collapse) is organised around a scree slope. It is a garden of restoration, showcasing the healing power of plant colonisation. The pioneer vegetation eases the chaos and brutality generated by the materials emblematic of the collapse (boulders, burnt wood, intertwined branches). Yet, the piles of materials create fascinating circular spaces where visitors can appreciate their hospitality to living things.

Project designers

OUPAPO (Ouvroir de paysages potentiels) is a landscaping agency based in Alsace and founded in 2011 by Luc Meinrad. It is active in all the stages of landscaping projects, whatever the scale. From gardens to the redevelopment of urban spaces, OUPAPO develops a method dictated by the context to bring an appropriate response to the landscaping potential and challenges of the site being transformed.

After starting out as an agronomist and agricultural development coordinator, **Luc Meinrad** turned to landscaping in 2011, when he graduated in landscape garden design from the École Nationale Supérieure de Paysage Versailles-Marseille (France). He went on to create the agency OUPAPO and work with passion as a landscape designer in France and Europe.



Materials

Boulders, pebbles, gravel, burnt wood, intertwined branches

© OUPAPO

Plants

Trees: *Toona sinensis*, *Salix caprea*, *Betula utilis*,

Liana: *Vitis riparia*, *Polygonum aubertii*, *Humulus lupulus*

Perennials: *Eryngium planum*, *Verbascum thapsus*, *Dipsacus fullonum*, *Eremurus stenophyllus*, *Stipa tenuissima* and *gigantea*, *Cephalaria gigantea*, *Panicum virgatum*



25. **Solum** **Atelier Faber**

Solum is a spatial and landscaped installation that draws attention to the importance of soil permeability in managing the water cycle. On the site of an old well in Luxembourg City, the work spotlights the gradual reclamation of inert soil by living organisms, restoring its porosity, which is essential in the fight against drought and flooding. The layered installation superimposes a band of reeds, an allegory of wetlands, on pillars of Luxembourg sandstone, the stone that enabled the formation of the largest aquifer in Luxembourg. The result is an archaic and primitive landscape which enhances the site's natural environment.

Project designers

Blending art, architecture and environmental awareness, Luca Antognoli and Gabriel Pontoizeau of Atelier Faber design works in situ that encourage reflection on our environment and our history. Embodying environmental or heritage issues, their installations aim to make the magic of reality perceptible through the spatial experience they create. Each work is based on a material from the landscape, chosen for its visual, symbolic and ecological properties. Their poetic implementation is conceived by the two artists and architects based on primitive and archaic actions.

Luca Antognoli and **Gabriel Pontoizeau** founded Atelier Faber in Paris in 2019 to work on the relationship between art, architecture and the environment.

From 2013 to 2018, **Luca Antognoli** worked for the architect Pascale Guédot. Since September 2019, he has been teaching design at the École nationale supérieure d'architecture de Paris-Belleville.

Gabriel Pontoizeau trained at Atelier Peter Zumthor in Switzerland and the Go Hasegawa architectural firm in Japan. He has been teaching at the École nationale supérieure d'architecture de Paris-Belleville et de Paris-La Villette for five years.



Materials and plants

The project is based on the lush plant life and the aesthetic and functional dynamics of the flora present on the site, reflecting the restoration of vegetation after the end of human activity. This rich and diverse flora has developed on its own, without human assistance or watering, and is by definition the vegetation most adapted and resistant to the site's soil and climate. The landscaping work will aim to support this flora by increasing the density of the shrub layer, with ruderal annual perennials in nitrogen-rich soils, and grasses and annual plants in dry soils. The structure is made of reeds and Luxembourg sandstone.

© Atelier Faber

LUGA living space : The Science hub in the Alzette valley

A meeting place in Odendahl park

The LUGA Lab is located in Odendahl Park in Pfaffenthal. This unusual open-air structure has been designed as a place where visitors and residents, local organisations and initiatives, and professional and municipal stakeholders can come together, with the aim of promoting intergenerational and intercultural interaction, inclusion, diversity and community life.

The “Kosettchen” project at the LUGA Lab seeks to reduce social isolation, raise public awareness of environmental issues, encourage dialogue between different audiences and promote the ongoing efforts of social stakeholders through a programme of round tables, conferences, workshops and other events.



© Topotek 1

What to discover in Kirchberg ?

Kirchberg, the business and residential district in the north-east of Luxembourg City, is the country's 'European quarter'.

On this site, in partnership with the Mudam, LUGA is presenting a monumental organic artwork, *The Living Pyramid* by the Hungarian visual artist Agnes Denes. One of the international offices will also be presenting the urban garden *Endymion*. Finally, visitors can discover the Garden of Multilingualism, designed by landscape architect Michel Desvigne and planted at the foot of the towers of the European Court, or explore Kuebeberg and its urban farm, installed specially for the LUGA exhibition.



The urban garden in Kirchberg



26. *Endymion*

Studio SNCDA, TIJD EN VLIJT

The urban garden *Endymion* stems from the ambition to create a space capable of offering a synesthetic experience which, by definition, involves different sensations. The installation is therefore composed of essential elements and minimal interventions. Three objects accompany and complete the *Endymion* planted garden, which can be reinterpreted as an allegory of the Greek myth of man's quest for the ideal garden. Based on the history of the site, each object represents a different way of inhabiting space: the flag - wind, the chimney - fire and the fountain - water.

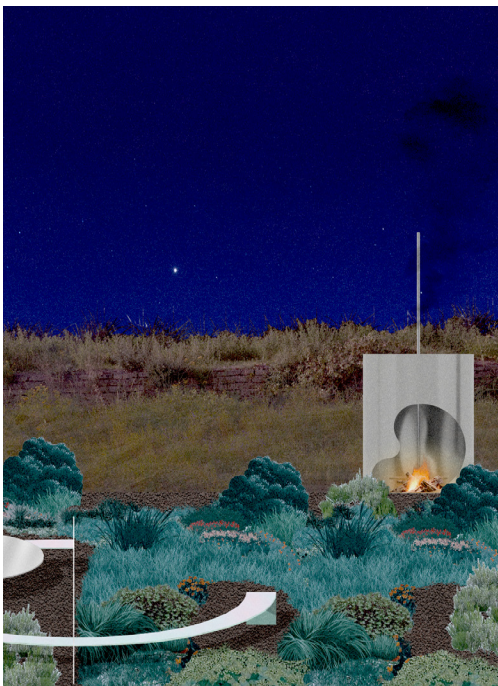
Like all the other LUGA gardens, *Endymion*, is designed with the circular economy in mind, and after the exhibition, they will be removed and rebuilt elsewhere.

Project designers

Studio SNCDA is an architecture and scenography agency founded by **Sara Noel Costa de Araujo** in 2014. SNCDA deploys its energy and strength in a quest for renewal by questioning the civic role of architecture in its landscape. Through projects of different scales and forms, both real and theoretical, made of bricks or on paper, it experiments through agency research, curation and the design of exhibition architectures. The agency develops, designs, constructs and makes buildings, public spaces and furniture, with the aim of fostering an ambitious, generous and inclusive conception of the world.

Jan Minne began working as a garden and landscape designer in Brussels in 2005. During his travels, he developed a great passion for the enormous wealth of plants he discovered both in nature and in botanical collections and gardens. As a self-taught gardener, he has acquired an in-depth knowledge of botany and the history of gardens and garden architecture which form the basis of his work.

Vue 1



Vue 2



Materials

Mixture of earth and pozzolan (ground), combination of different metal objects

Plants

Family of allelopathic plants: Euphorbia, Artemisia, Salvia, Phlomis, Cytisus, Thymus, Santolina, Achillea, Cortaderia, Calamagrostis and Eryngium

© Studio SNCDA, TIJD EN VLIJT

Landscape and artistic installation in Kirchberg



32. *The Living Pyramid* Agnes Denes

The Living Pyramid is a harmonious marvel of mathematics and plant life combining the precision and stability of engineering with the day-to-day changes induced by growth and survival. It addresses the issue of world hunger and the threat of overshooting our resources unless we improve our planning - or our planting.

A project developed in collaboration with Mudam.

Biography

Agnes Denes (born 1931 in Budapest, based in New York) is a leading figure in American conceptual art and a pioneer of environmental/ecological art who rose to international attention in the 1960s and 1970s.



Agnes Denes, *The Living Pyramid*, 2015. Socrates Sculpture Park, Long Island City, NY
© Agnes Denes, Courtesy Leslie Tonkonow Artworks + Projects

Agricultural project in Kirchberg



The Urban Farm in Kuebebiert

The Fonds Kirchberg has developed an urban design charter for the “Kuebebiert district”, which will be developed over the next few years and will include 3,000 new homes. This vast project aims to meet a number of major social, environmental and economic challenges.

In this context, an urban farm has been created to meet the needs of the district’s inhabitants. The aim is to contribute to the city’s short-distance travel strategy through local production and sales, maintaining and retaining the site’s agricultural heritage, raising awareness of where food comes from and, finally, creating a supply for the upkeep and management of the area’s open spaces.

This professional micro-farm project will be laid out over vast expanses allowing a variety of multi-functional agricultural activities, including market gardening, arboriculture, educational visits, the sale of local produce and a host of eco-awareness activities and events.

The programme during the LUGA exhibition will be developed in collaboration with the two market gardeners Aurel & Axel (Axel Barreau and Aurélien Galodé), who are tasked with creating and running this urban farm.



Kuebebiert - Aerial view, houses and urban farm © Fonds Kirchberg

What to discover in Nordstad ?

The town of Ettelbruck, secretly named “Bauerestad” (Luxembourg’s agricultural town) is located in Nordstad, a north-central region of Luxembourg with a rich agricultural past, making it an ideal venue for addressing the LUGA themes. In particular, for over 40 years, Ettelbruck has hosted the annual Agricultural Fair where local consumers and producers come together and share ideas.

The LUGA exhibition in Nordstad will also include a vast part demonstrating the experimental fields in Bettendorf and showcasing the Gilsdorf Technical Agricultural College, a major institution for training in agriculture, horticulture, the natural environment and mechanical engineering.

In 2025, visitors to the LUGA will be able to discover the “Urban Agricultural Trail” in Ettelbruck.



Agriculture hub

Projets agricoles

- 01 Démonstration de cultures agricoles
- 02 Installation de biochar
- 03 Expositions du patrimoine agricole
- 04 Installation d'hydroponie et de champignons
- 05 Installation d'aquaponie

Jardins urbains

- 06 Jardin sensoriel agricole
- 07 Jardin communautaire
- 08 Vertical Farming et plateformes d'essais variétaux de légumes
- 09 Plantation de « Superfoods »

Installations paysagères et artistiques

- 10 Arboretum "Haart"
- 11 Collection de variétés d'arbres historiques
- 12 Ancienne pépinière

Pavillons et lieux événementiels

- 13 Marché hebdomadaire dans la zone piétonne
- 14 CAPE - Centre des Arts Pluriels Ettelbruck
- 15 Pavillon ouvert et scène
- 16 Pavillon ouvert

Agricultural projects in Nordstad

Fësch Haff Aquaponics

With its aquaponics facility, *Fësch Haff* presents an alternative method of growing fruit and vegetables above ground, as well as a change of attitude regarding food supply in our society. In response to increasingly harsh and unpredictable climate conditions, aquaponics is a resilient and adaptable alternative to traditional farming techniques that will allow more varied and larger quantities to be grown locally in future.

Visitors will be able to learn about the complete aquaponics cycle, from food for fish to mature plants. In 2025, they will be able to visit the facilities, attend workshops on aquaponics and discover the fascinating techniques behind these innovative methods.

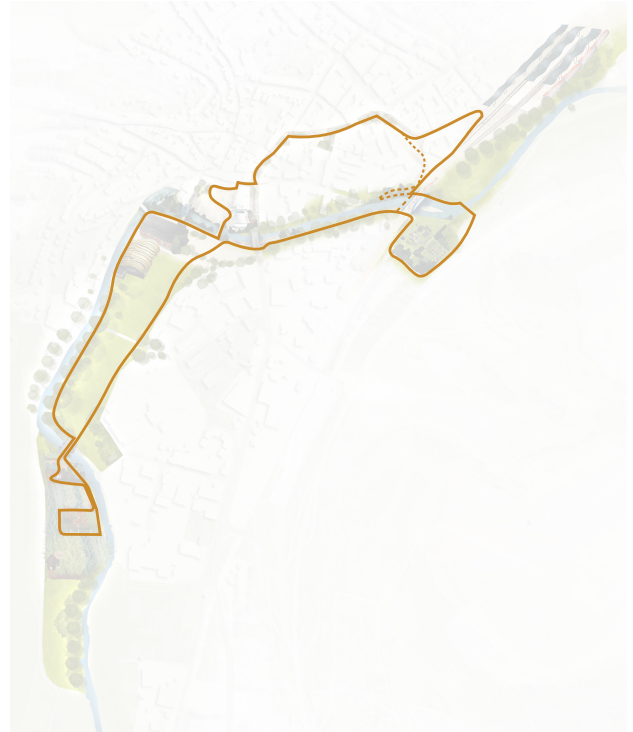
The Urban Agricultural Trail

On arriving at Ettelbruck train station, a fine example of a building designed with the circular economy in mind and still partly under construction in 2025, the LUGA Urban Agricultural Trail will offer two options for visitor to explore: firstly, along the Alzette River to see the community gardens, the natural restoration of the river and its banks, as well as vegetable variety trials; or a stroll through the pedestrian streets of this charming town to discover unusual urban farming projects, gardening techniques on tiny plots, and many other interesting projects.

Finally, on Place Marie-Adélaïde, visitors will discover an aquaponics project, an innovative and futuristic food production system.



© Plan Contexte



© LUGA

Foire Agricole Ettelbruck en 2025

Each year, the Foire Agricole Ettelbruck (Ettelbruck Agricultural Fair) is one of the largest agricultural events in Luxembourg, bringing together stakeholders from the green economy, agricultural trade and innovation to promote regional produce and raise consumer awareness. An extensive programme will be organised during this event, so that the whole family can discover the secrets of farming. Visitors will also be able to learn about farming projects including a 'superfood' plantation, biochar and photo exhibitions on the lives of farmers. The agricultural installations will feature demonstration plantations of the crops grown in Luxembourg's countryside and will focus on non-conventional farming techniques.

Throughout the six months of the LUGA exhibition, Daïchwissen will host an innovative concept of fully mobile agricultural projects that can be adapted to fairs, sporting events, local festivals and concerts. Daïchwissen will also feature farming projects such as a 'superfood' plantation, biochar and photo exhibitions on the lives of farmers.



© Foire Agricole Ettelbruck

Agricultural developments - Daïchwissen

A movable bridge will lead visitors from a multi-purpose urban ground (used as a sports field, and for fairs and sports competitions) into the wonderful world of farming in Luxembourg.

The Daïchwissen agricultural developments consist of demonstration plantations of the crops grown in Luxembourg's countryside. These developments will focus on non-conventional farming techniques, with activities such as comparisons between conventional and mechanical weeding, demonstrations of robotic technologies and many other fascinating workshops.

The developments will also be showcasing the crops grown in Luxembourg such as wheat and potatoes, different varieties of herbs and maize, tea plantations and more unusual varieties such as hemp, flax, buckwheat, rape and mustard. All the facets of Luxembourg agriculture will be on display.



© Foire Agricole Ettelbruck

LUGA Living space : the Agriculture Hub in the Nordstad

The Agricultural Hub, or AgriLab, a pavilion set up on the redeveloped square in front of the Daïchhal, will house a visitor centre, a space for workshops, conferences and exhibitions as well as tasting sessions of regional and local seasonal food and drinks, made in Luxembourg by local producers.

LUGA Programme and Events in 2025

162 days to enjoy the LUGA experience

Visitors will be able to discover and enjoy the LUGA experience through a 162-day programme, packed with events for young and old, professionals and amateurs, sports enthusiasts and adventurers alike. In collaboration with numerous partners, the LUGA will stage no less than 1,000 events over the six months of the exhibition, including conferences, sports activities, relaxation sessions, games, creative workshops, guided tours, educational walks, gardening sessions, live shows, and agriculture, viticulture and horticulture to recharge your batteries, find inspiration and enjoy life in Luxembourg.

LUGA Key Events in 2025:

LUGA Preview for professionals

07.05.2025



LUGA Trail



Luxembourg-City LUGA Festival

10.05.2025



Edouard André municipal park

LUGA Nordstad Festival

11.05.2025



Ettelbruck

Closing Party **18.10.2025**



Alzette valley and Nordstad



LUGA pre-programme «Sow in 2023, harvest in 2025»: next event

Conference: De la graine à l'assiette. Des semences locales pour des systèmes alimentaires durables. In collaboration with Cité Bibliothèque. Speaker Frank Adams.

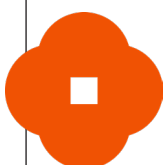
Information & bookings

Date and times Thursday, 6 June 2024 from 6-7 pm

Venue Cercle Cité – 2 Rue Genistre, 1623 Ville-Haute Luxembourg

Languages French and German

Bookings <http://tickets.luxembourg-ticket.lu/36494>



Subscribe !



Food waste is an ethical, economic and ecological challenge. LUGA will therefore officially be an «Anti-waste» event and will take measures to reduce food waste at sites where food is served.



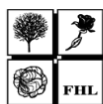
with the financial support of



LE GOUVERNEMENT
DU GRAND-DUCHÉ DE LUXEMBOURG
Ministère de l'Agriculture,
de l'Alimentation et de la Viticulture



observer



LUGA NORDSTAD
in partnership with

